

RCC Bermuda (Bermuda SPOC)

Denis Rowe
Chief Radio Officer / RCC
Controller
Marine & Ports Services
Bermuda Government

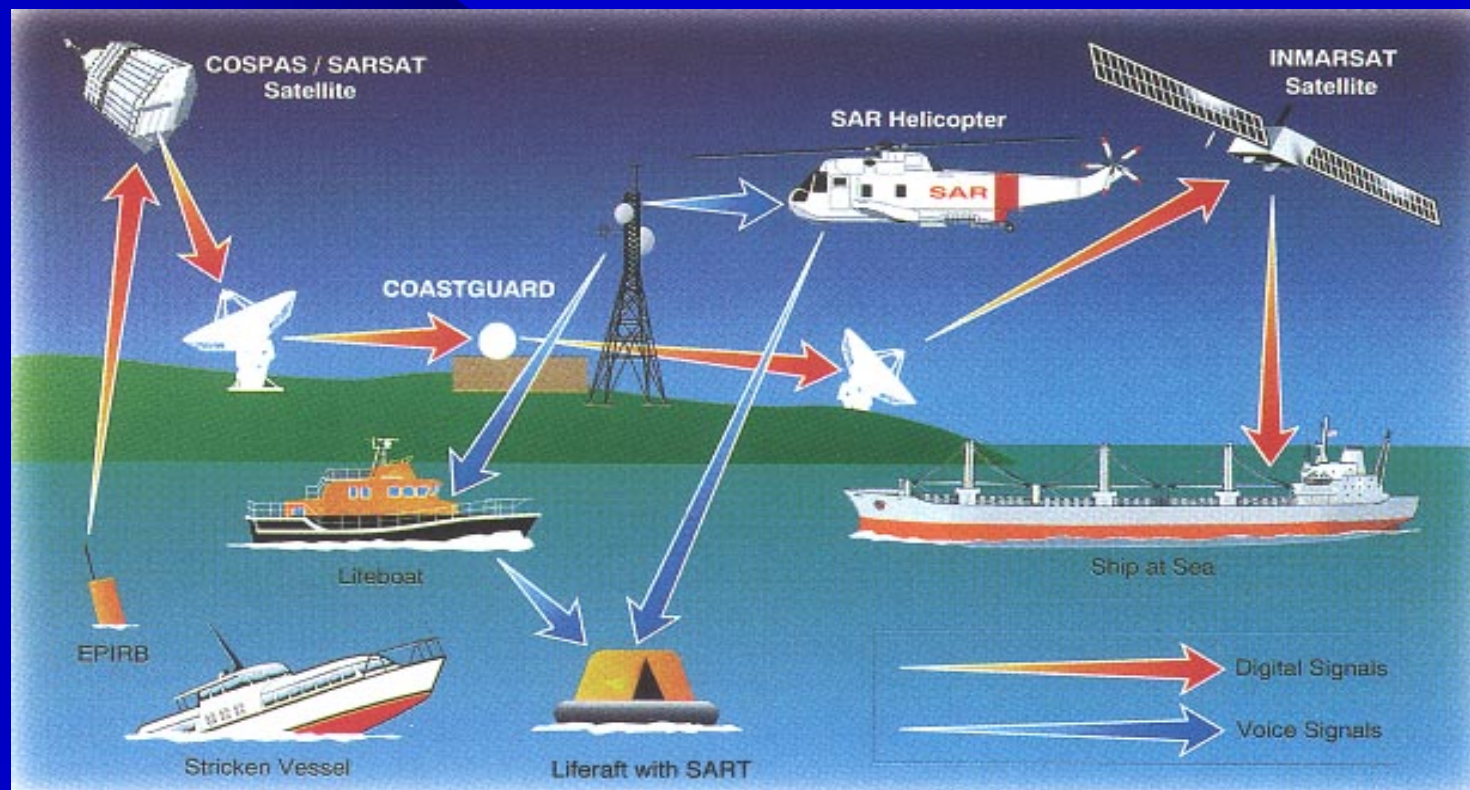


Miami 2009

Bermuda Maritime Operations Centre

- ◆ Coast Radio Station
- ◆ Vessel Traffic Monitoring (VTS)
- ◆ RCC Bermuda (Bermuda SPOC)

Global Maritime Distress & Safety System



Global Maritime Distress & Safety System



Satellites

Global Maritime Distress & Safety System



EPIRB / ELT / PLB

EPIRB / ELT / PLB alerts to RCC Bermuda

Beacon alerts within 200 NM Bermuda - Also routed to RCC Norfolk

Alerts from Bermuda programmed beacons worldwide

USMCC to Bermuda SPOC (RCC Bermuda)

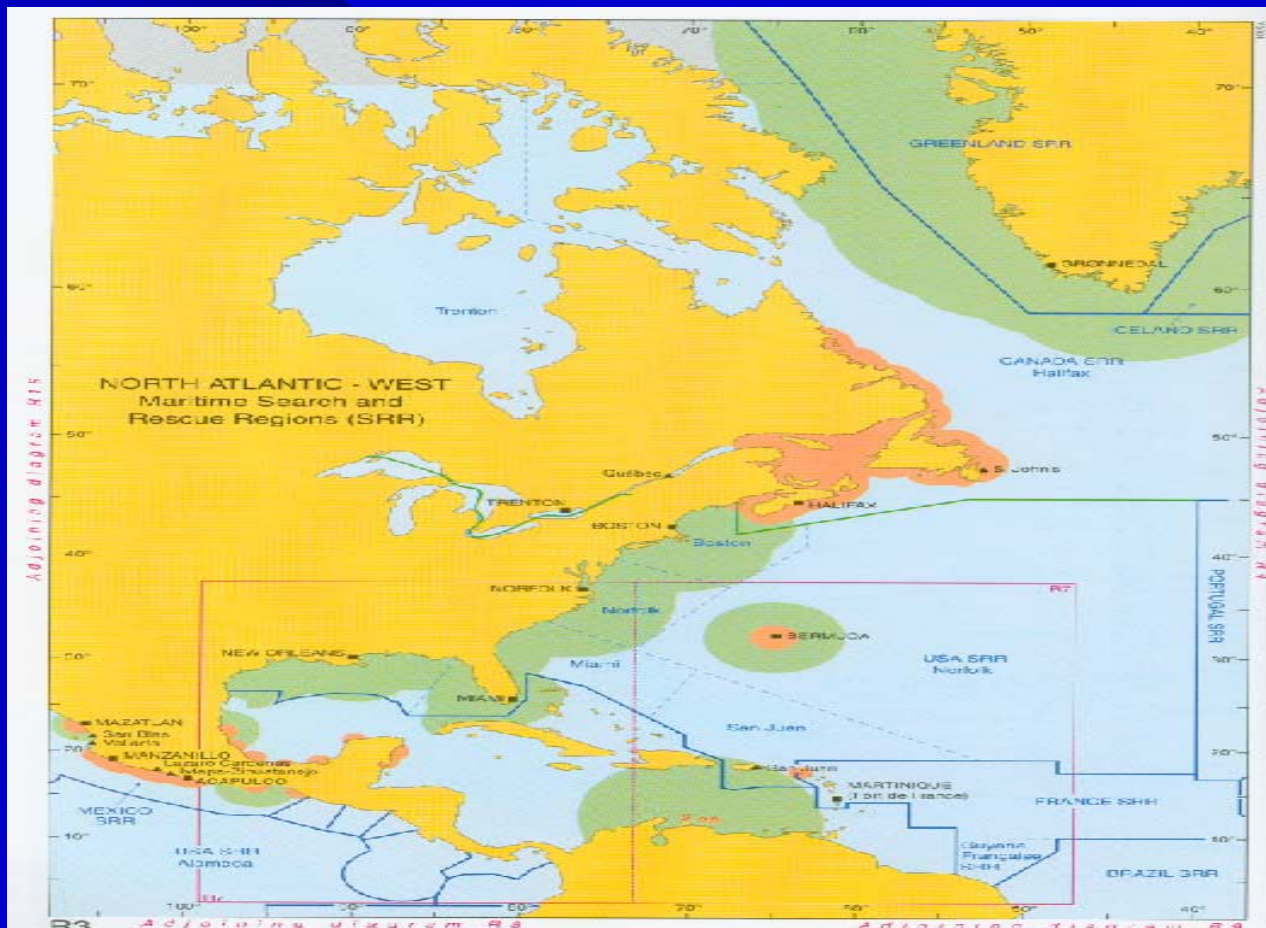
USMCC - AISR (FAA web based application - replace AFTN) - EMS SARMaster using print function

Better option - VPN with direct connection to USMCC

International Search & Rescue



International Search & Rescue



Local Search & Rescue (Marine Police)



Local Search & Rescue (Marine & Ports)



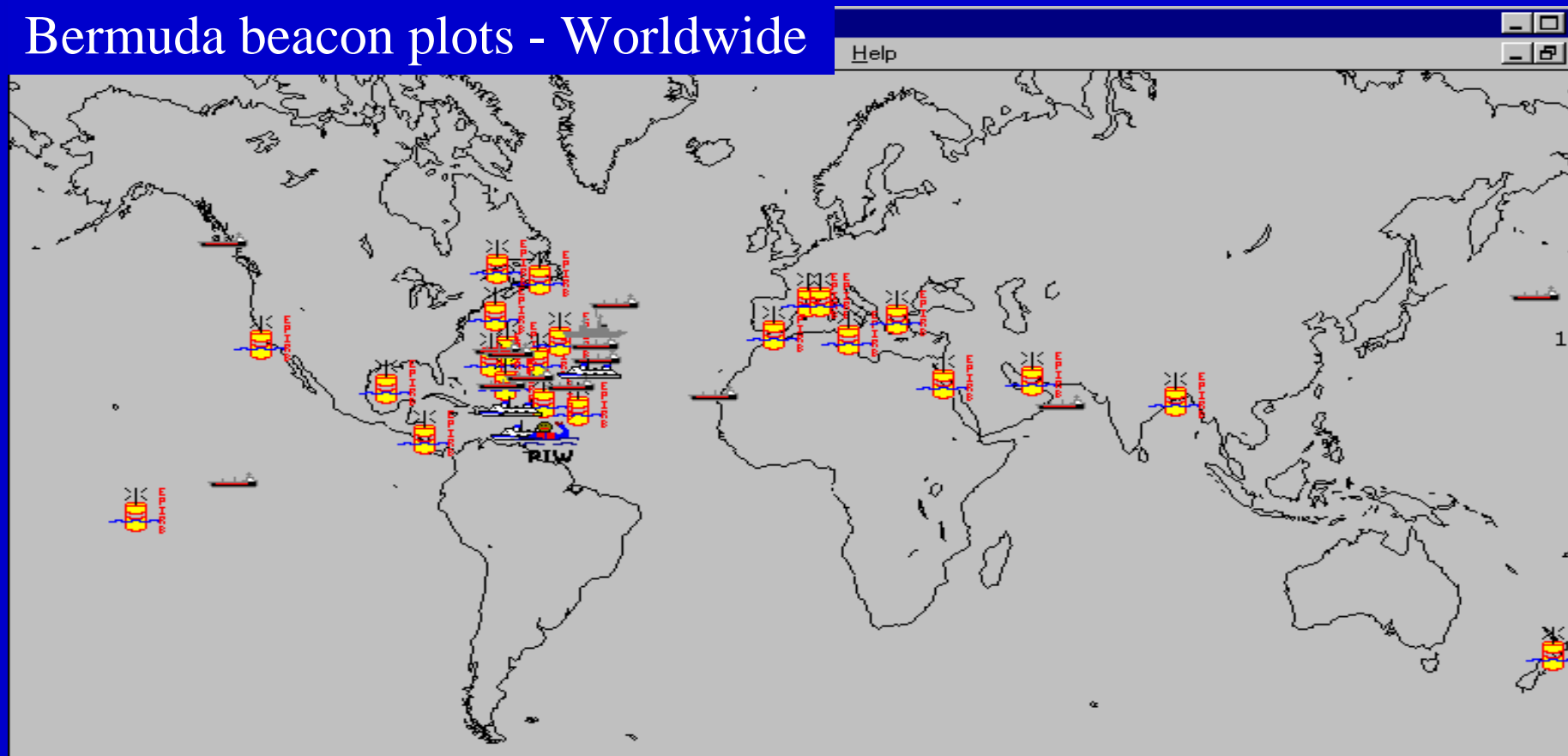
International Search & Rescue



U.S. Coast Guard

International Search & Rescue

Bermuda beacon plots - Worldwide



RCC Bermuda - EPIRB/ELT/PLB Database

- ◆ 452 Vessels / Craft EPIRB - 561 10% Increase
- ◆ 440 Aircraft ELT - 768 25% increase
- ◆ Yachts/Kayak PLB - 28 20% increase
- ◆ 1200 visiting yachts per year (Pre-arrival/EPIRB/PLB info)
- ◆ All Beacons onboard any Bermuda ships/aircraft worldwide must be registered correctly with RCC Bermuda

Contact details for RCC Bermuda

Mr. Scott Simmons – Coordinator of Maritime Safety & Security - ssimmons@gov.bm

Mr. Denis Rowe – Chief Radio Officer / RCC Controller – dbrowe@gov.bm

Rescue Co-ordination Centre / Bermuda Maritime Operations Centre

19 Fort George Hill
St. George's GE 02
Bermuda

Tel: (441) 297-1010 / **Fax:** (441) 297-1530

E-mail: operations@rccbermuda.bm / dutyofficer@marops.bm (24 hours)

Internet: www.marops.bm

Telex: INMARSAT C (581) 431010110 / (584) 431010120

AFTN: TXKFYCYX

Contact details for Department of Civil Aviation - Bermuda

Mr. Christopher Pearce – Operations Officer – Tel. +441 297-0365 / 330-1437 / 299-8614

Ms. Jean Siggins – Operations Officer – Tel. +441-299-8614/330-1431/297-0229

Bermuda Department of Civil Aviation

Mailing Address:

P.O. Box GE 218
St. George's, GE BX
Bermuda

Telephone: (441) 293-1640 / **Fax:** (441) 293-2417

Email: info@dca.gov.bm

Internet: www.dca.gov.bm

AFTN: TXKFYAYX

RCC Bermuda



Questions?

St George's Harbour